

w. bennington road

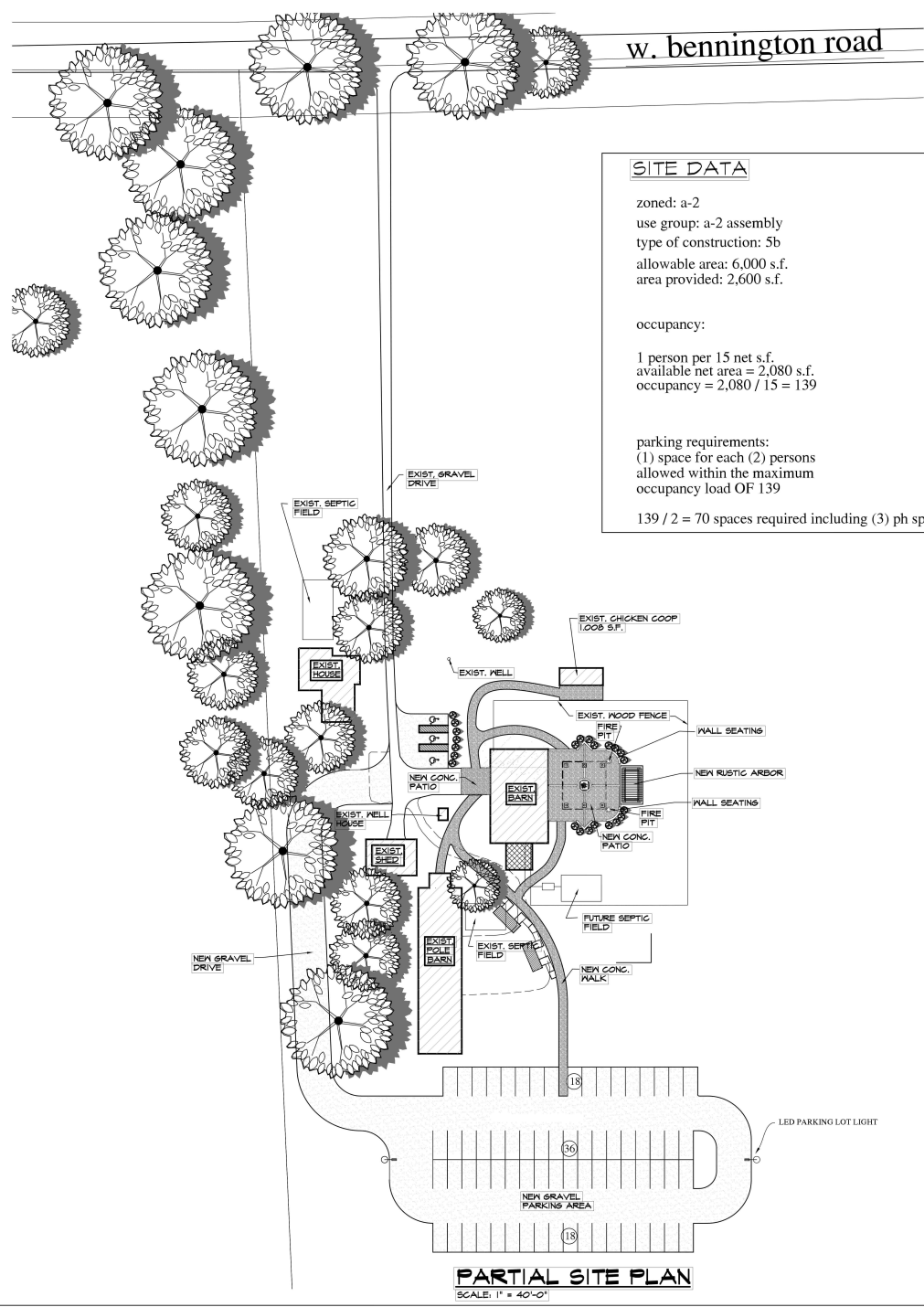
**SITE DATA**

zoned: a-2  
 use group: a-2 assembly  
 type of construction: 5b  
 allowable area: 6,000 s.f.  
 area provided: 2,600 s.f.

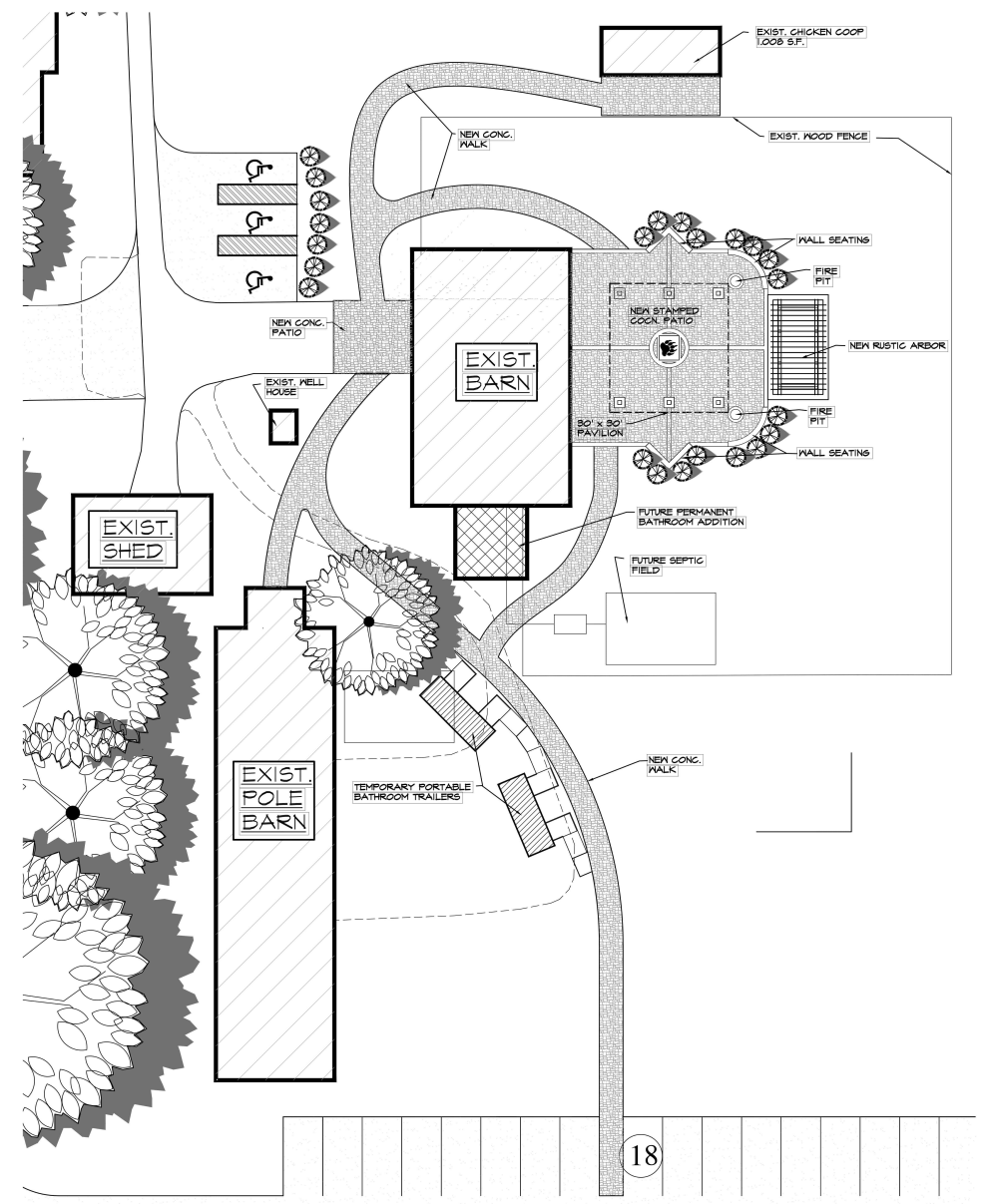
occupancy:  
 1 person per 15 net s.f.  
 available net area = 2,080 s.f.  
 occupancy = 2,080 / 15 = 139

parking requirements:  
 (1) space for each (2) persons  
 allowed within the maximum  
 occupancy load OF 139

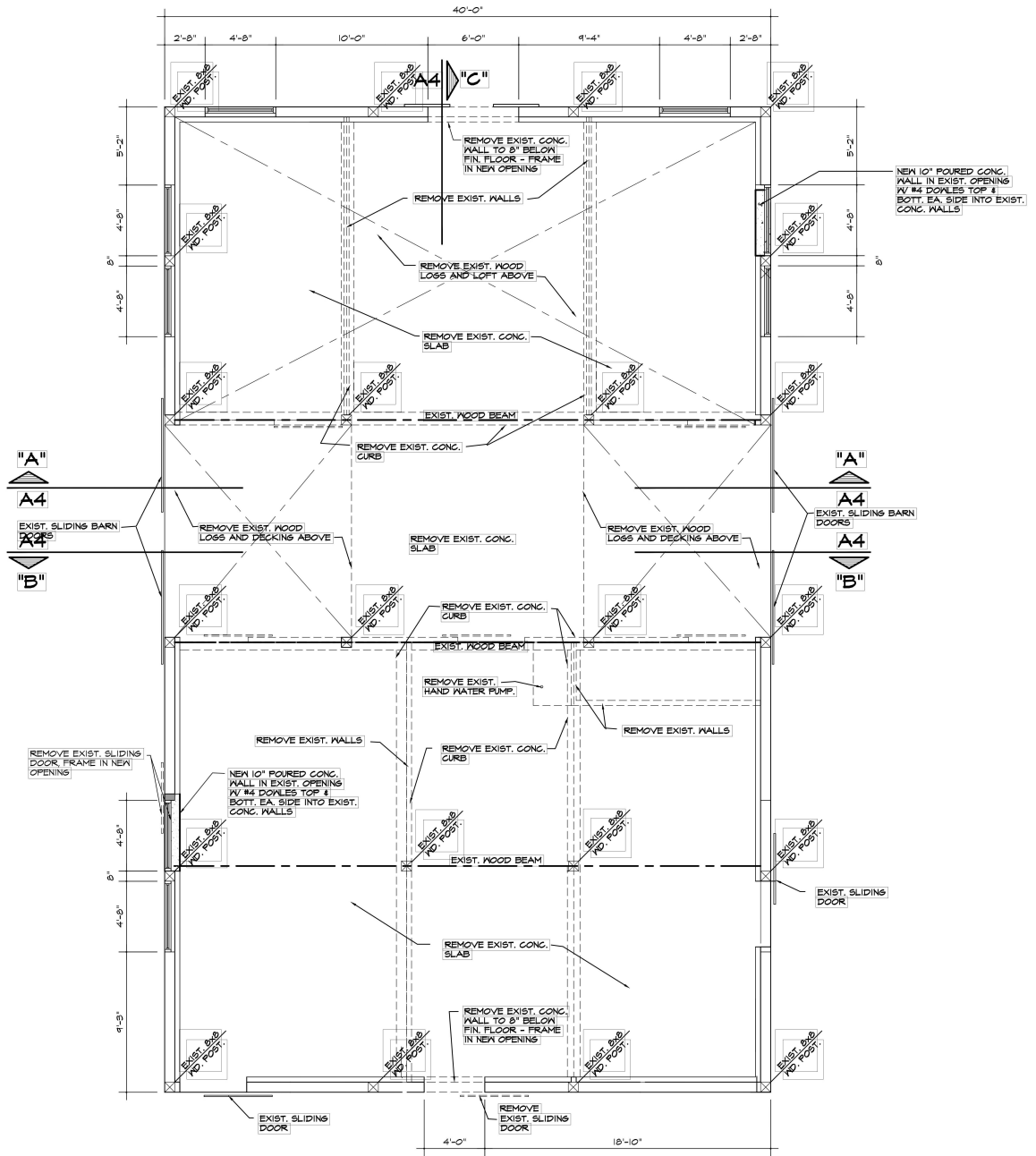
139 / 2 = 70 spaces required including (3) ph spaces



**PARTIAL SITE PLAN**  
 SCALE: 1" = 40'-0"



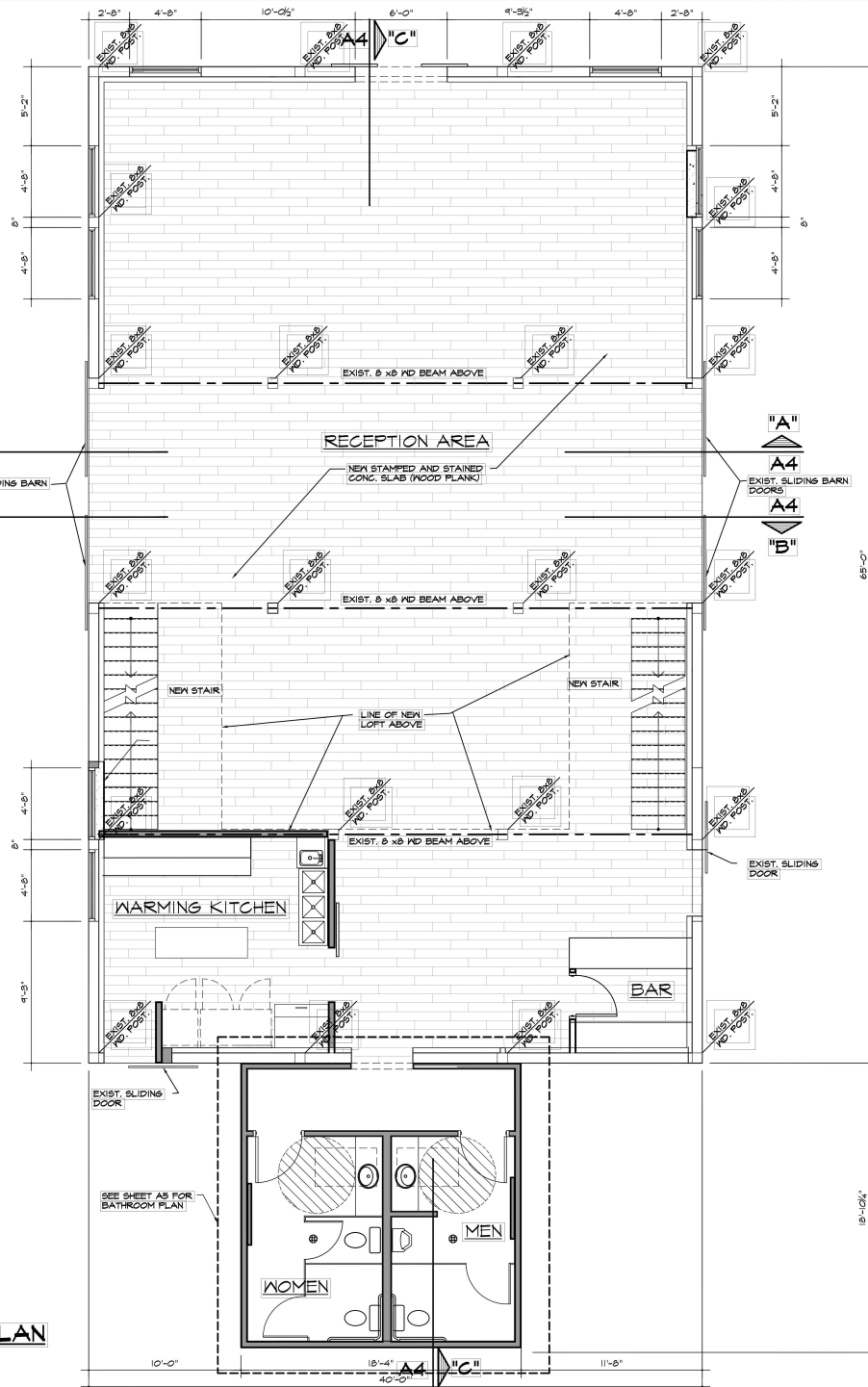
**PARTIAL SITE PLAN**  
 SCALE: 1/16" = 1'-0"



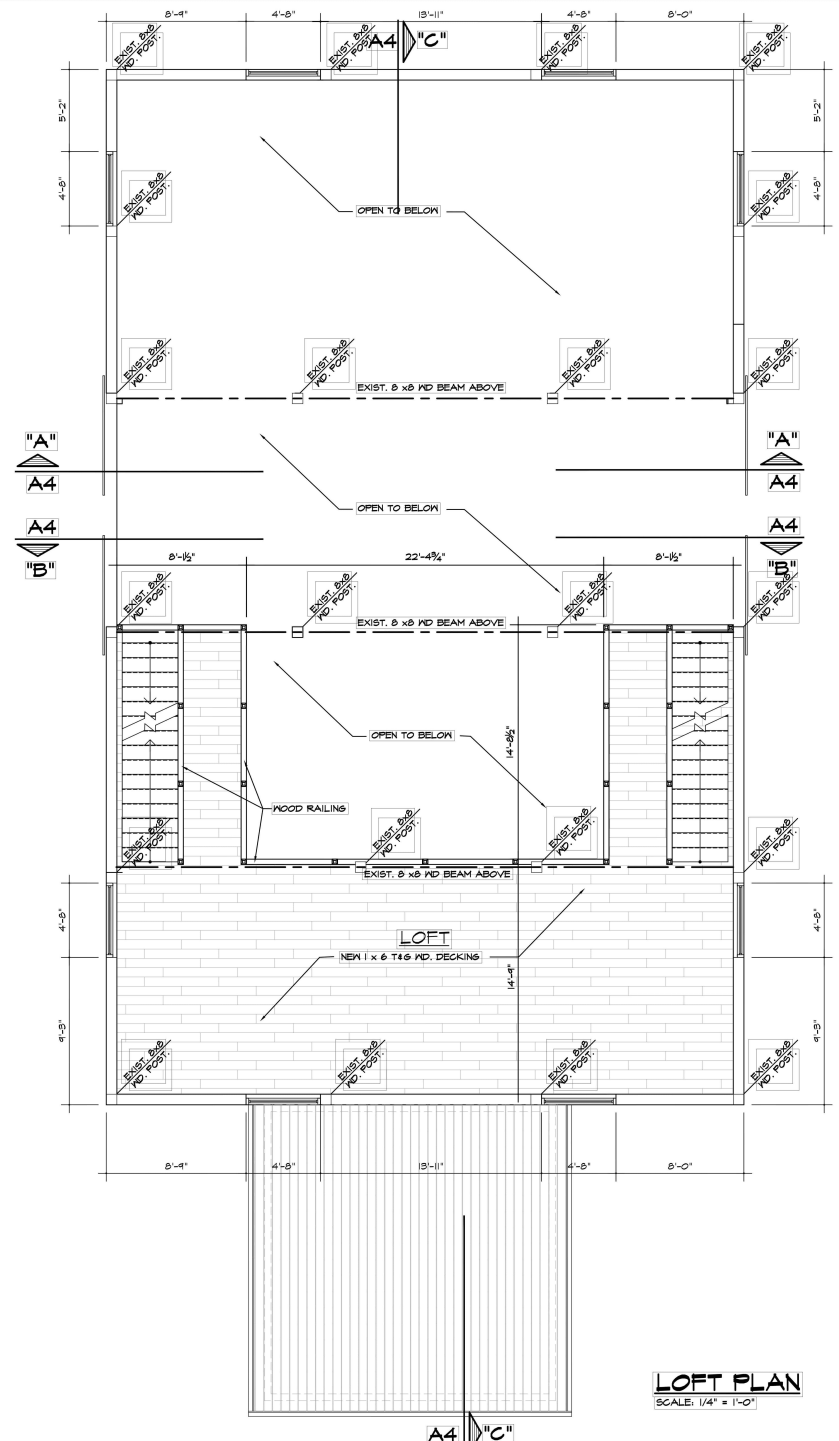
**DEMOLITION PLAN**

SCALE: 1/4" = 1'-0"

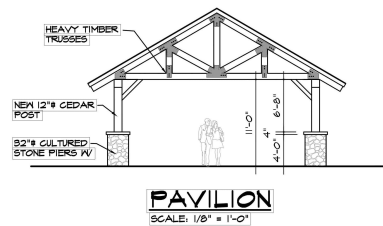
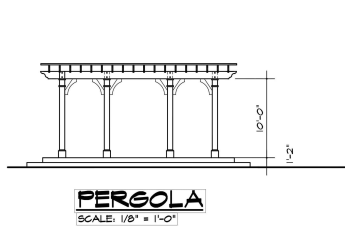
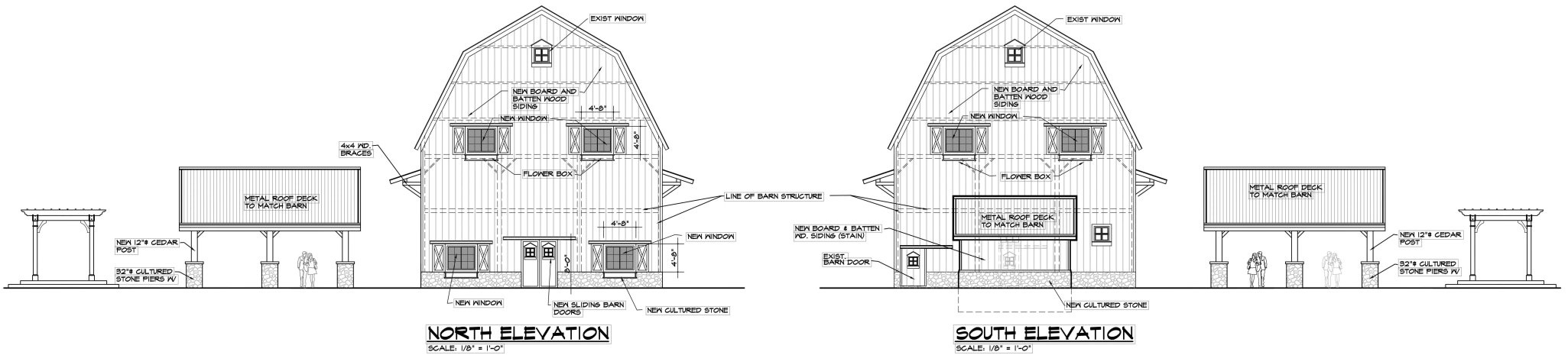
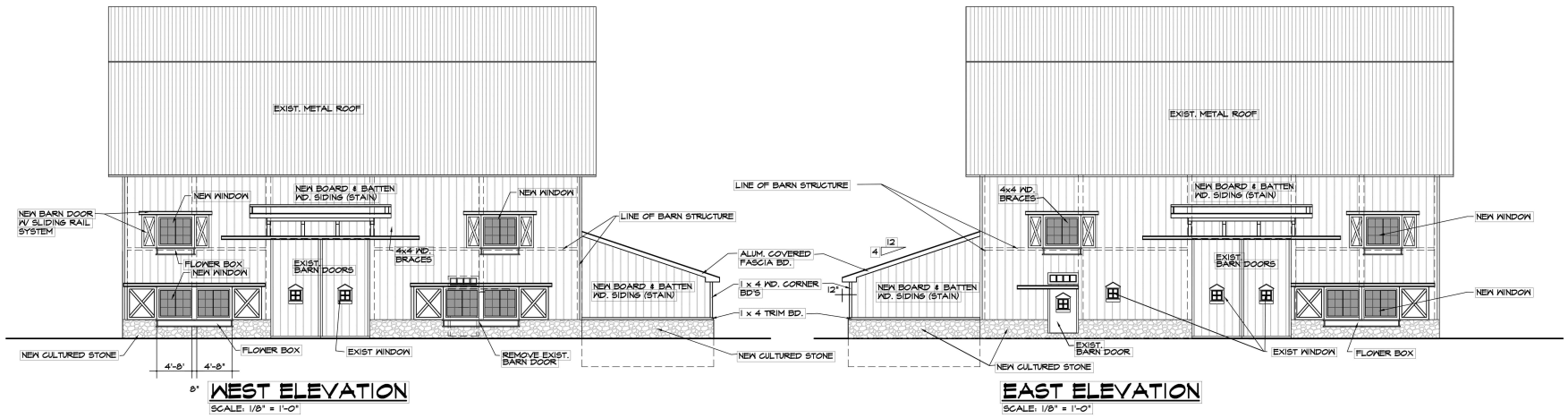
TAKE CARE IN REMOVING EXIST. LOGS, LOFT DECKING AND WALL BOARDS FOR REUSE

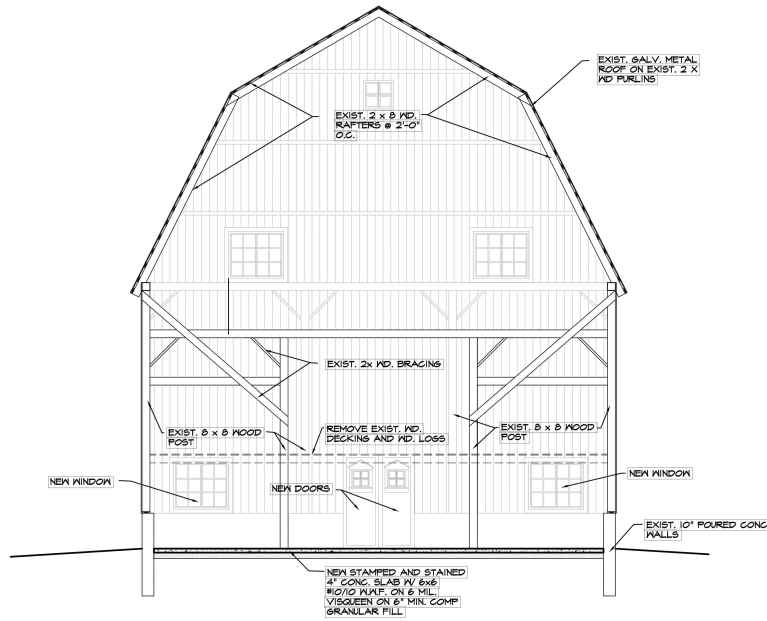


**FLOOR PLAN**  
SCALE: 1/4" = 1'-0"

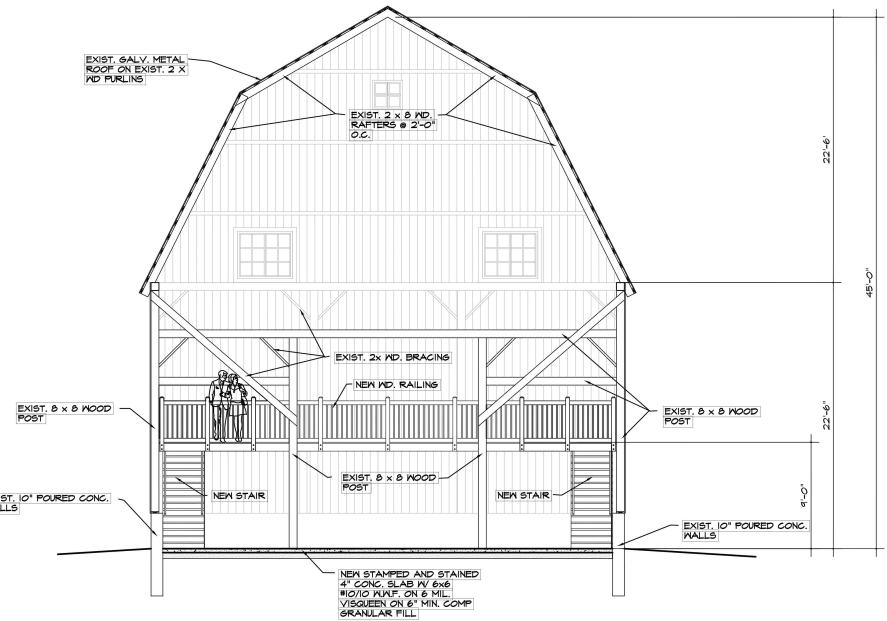


**LOFT PLAN**  
SCALE: 1/4" = 1'-0"

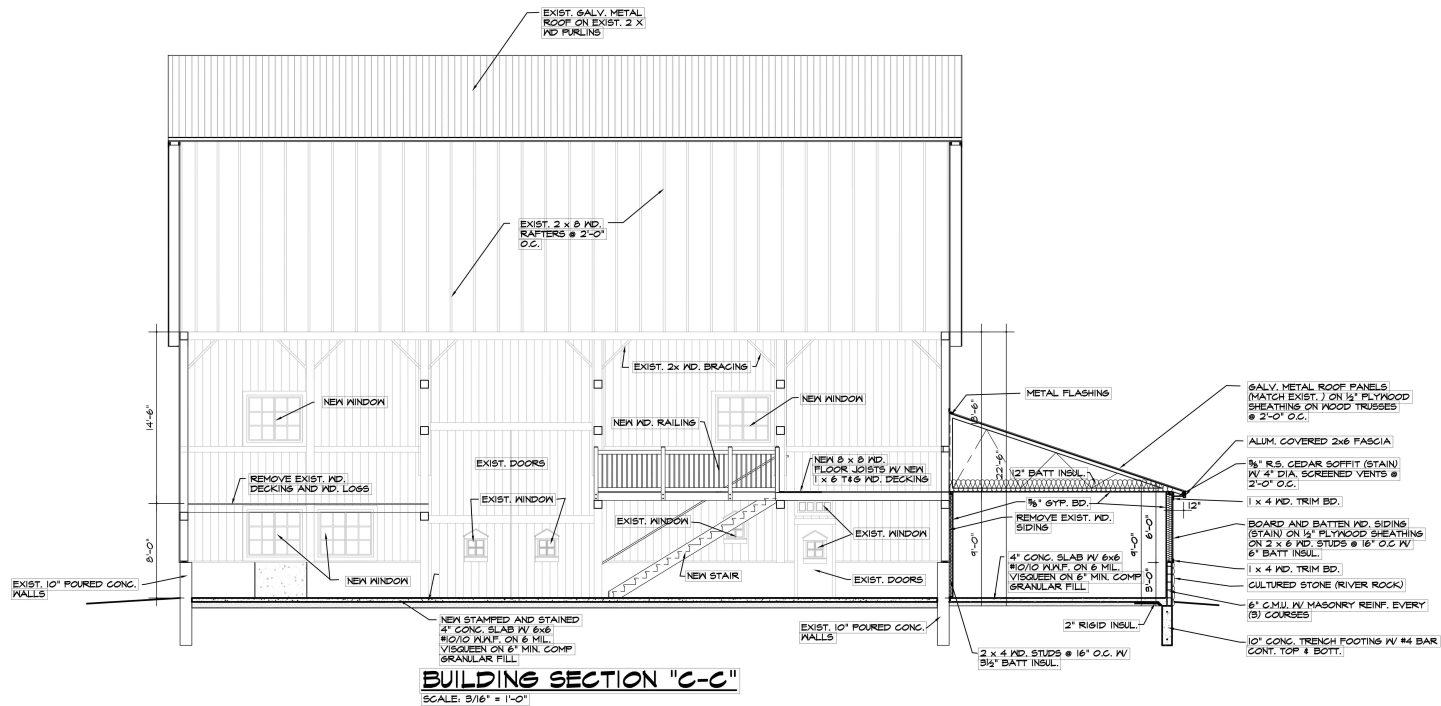




**BUILDING SECTION "A-A"**  
SCALE: 3/16" = 1'-0"



**BUILDING SECTION "B-B"**  
SCALE: 3/16" = 1'-0"



**BUILDING SECTION "C-C"**  
SCALE: 3/16" = 1'-0"